

**RAFFAELE
VITOLO**

NASTRI

Ribbons - Les bandes - Cintas - Bänder

SBIECHI - SERPENTINE
NASTRI JACQUARD



MADE IN ITALY



Satin Double Face

No.	1	3	5	9	12	20	1/2	3/4	1 1/2
mm	8	16	25	40	50	70	3	6	10

1351/4
50/500mt

1351/2
25/100mt

2351/1
10mt



Raso Semplice Ballerina
Simple Satin - Satén simple - Einfacher Satin

25mt

1350/2
mm 16 - 25*



1*

153

86

2



Nastro Raso per Coperte

Satin tapes for Blankets - Ruban de satin pour couvertures - Cinta de raso para mantas - Satinband für Decken

1353/2
mm 70* - 100

11mt



1

153

228

66

65

242

162

81

150

86

211

194

1095

238

29

2

222

156

299

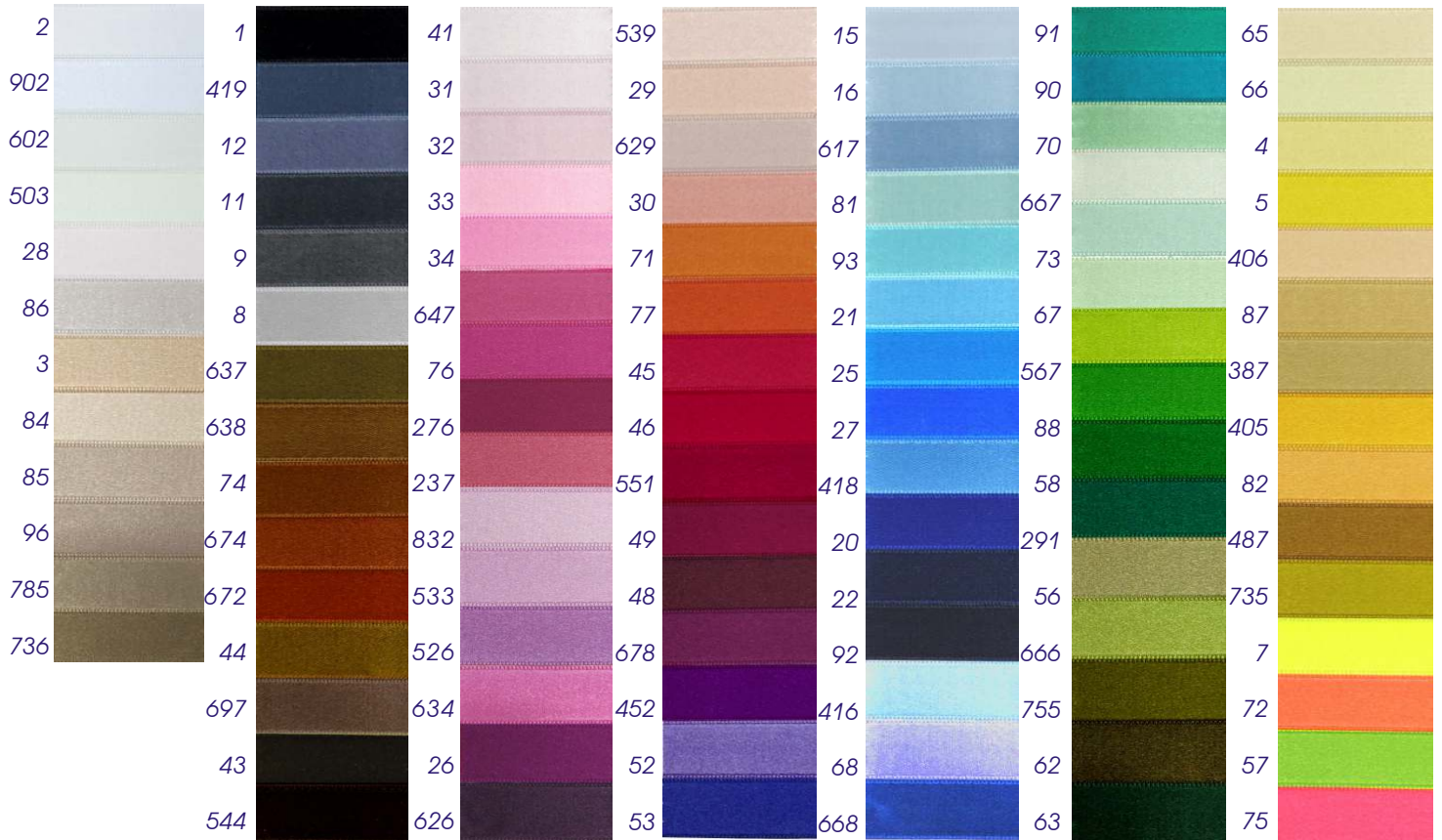




Satin Double Face Alta Qualità
High Quality - Haute qualité

1351/5

mm 3 - 6 - 8 - 16 - 25 - 38 - 48 - 68



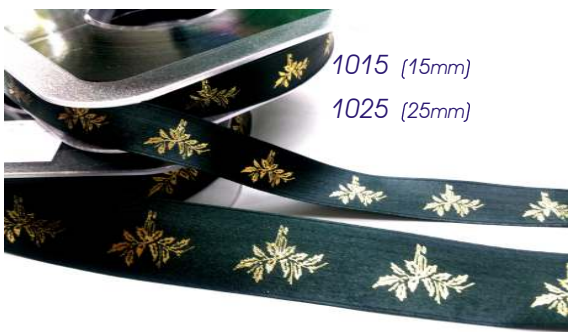
Nastro Raso Stampato
Printed - Imprimé - Impreso - Gedrukt

1351/9

25mt

1115 (15mm)

1125 (25mm)



1351/8

No.	3	5	1½
mm.	15	25	10

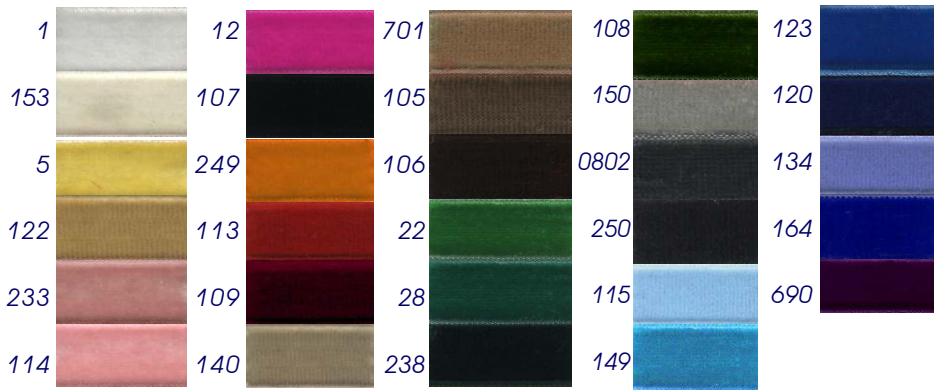
10mt





10mt

Velluto - Velvet
1359/1



No.	3	5	9	12	1 1/2
mm.	15	25	37	49	9

Superior
1359/4



Elastico
Elastic - Élastique - Elástico - Elastisch

1359/8 - 1 1/2
(10mm)

25mt

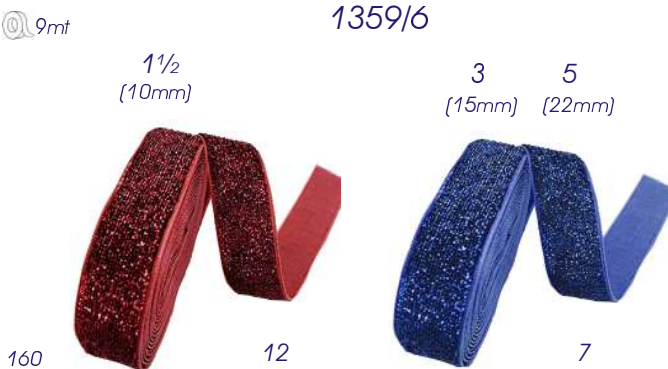


1359/6

Glitter

1359/5 - 3/4
(6mm)

18mt



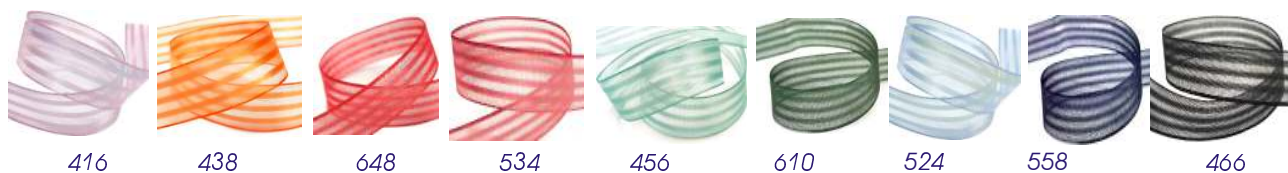
Organza
Organdie
1339/2
mm. 6 - 10 - 15 - 25 - 40



con Raso - with satin - Satén
1339/5
mm. 10 - 15 - 25

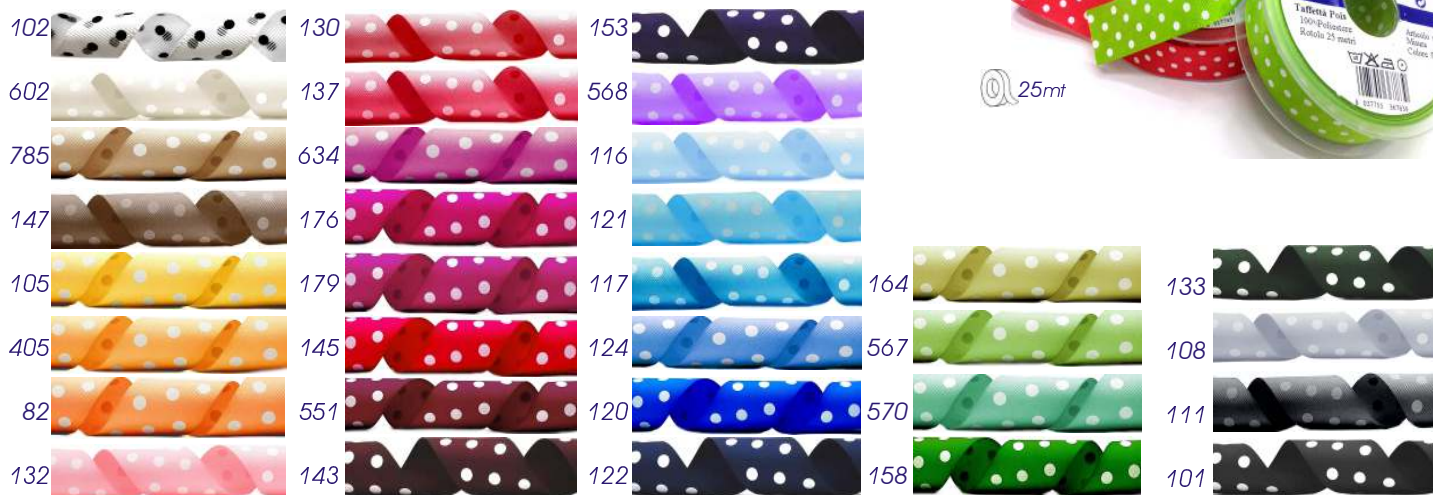


50/100mt



Taffetà
1350/4

mm. 10 - 16 - 25 - 38 - 48 - 68 - 84



25mt



25mt

Taffetà 1350/3

mm.10 - 16 - 25 - 38 - 48 - 68 - 84



Nylon 100%

No.	1 ½	3	5	9	12	20
mm.	10	15	25	10	52	70
1343/2	x10		x5			
2343/2	10mt					



25mt

No.	1	1 ½	3	5	9	12	20
mm.	8	10	15	25	10	52	70
1343/0	x10		x5				
2343/0	10mt						



10mt

1343/9
mm.10 - 20 - 40

1341/1 60mm

25mt

Lamè Animato

Animated Lamé Ribbon-Ruban Lamé Animé -Cinta Lamé Animada-Animiertes Lamé-Band



1



2



3

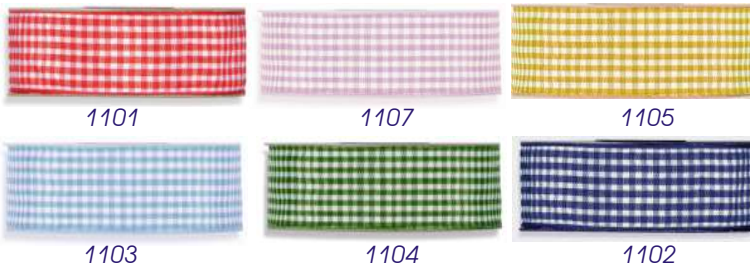


4

Nastro Nylon Stampato
Printed - imprimé - Impreso - Gedruckt

1343/3

mm 10 - 15 - 25



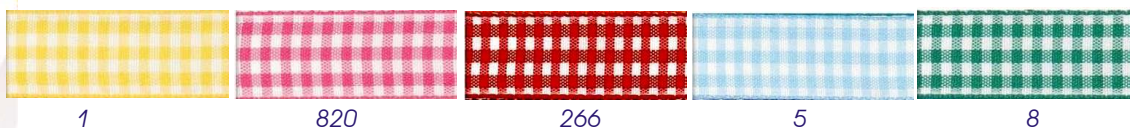
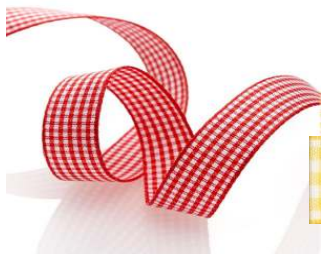
Nastro Nylon Tessito

Weaved - Tissé - Tejida - Gewebt

1343/8

mm 10 - 15 - 25

25mt



Elastico

Elastic - Élastique - Elástico - Elastisch

1343/6

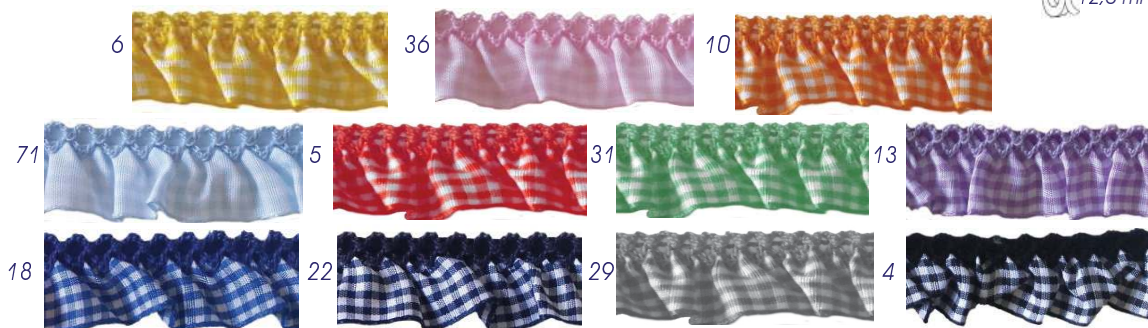
25mm

1343	20mt
2343	10mt



2024/8 70092 (2cm)

12,5 mt



1343/7 - 144030 (30mm)

11mt



Gros Grain Elastico

Elastic - Élastique - Elástico - Elastisch

1150/3 - 070093 (2cm)





Gros-Grain 100% Poliestere

No.	3	5	7	9	12	20
mm	15	25	30	40	50	70

2345/1		10mt
1345/1		x10/5mt
1345/4		100 mt



1	148	47	33	104	243
25	285	86	32	11	61
151	210	39	407	12	63
153	255	223	140	1094	
228	191	324	31	242	1991
66	186	119	29	150	1992
570	154	108	30	20	1993
535	222	106	194	21	1994
128	156	2	189	275	
230	51	408	188	71	
155	46	180	10	64	

Gros Grain Lurex 1345/9

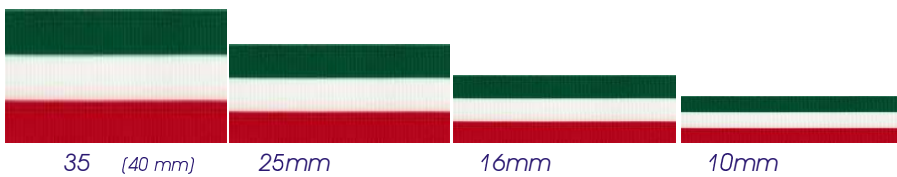
No.	3	5
mm.	15	25

10mt



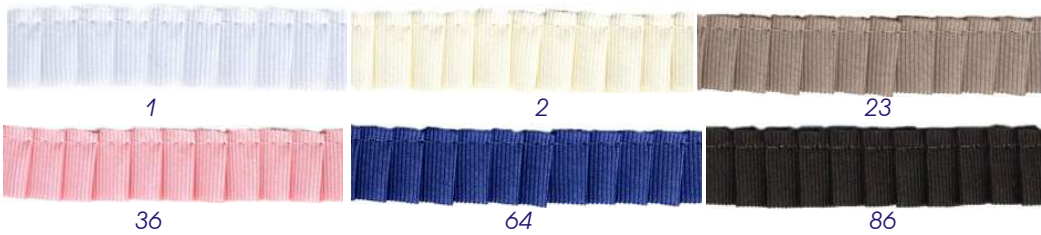
25mt

1345/5

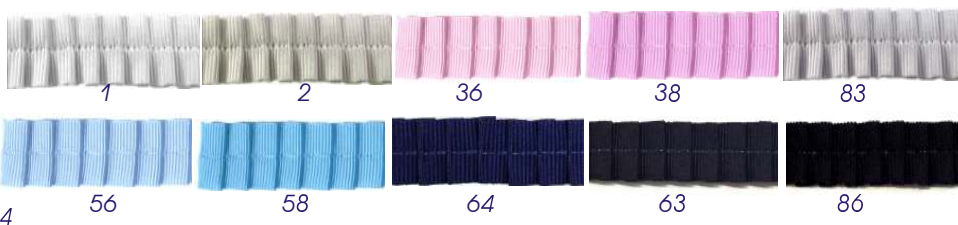


Plissé

1345/6 - 3P (15mm)



1345/6 - 3T (15mm)



1345/8 - 43
(24mm)



Peluche
50% Poliestere 50% Acrilico
1345/8 - 33
25mm

25mt



1



2

1345/8 - 16mm



1345/8 - 50 (25mm)



1345/8 - 54 (25mm)



1345/8 - 5 (35mm)



43912 (35mm)

1151/5



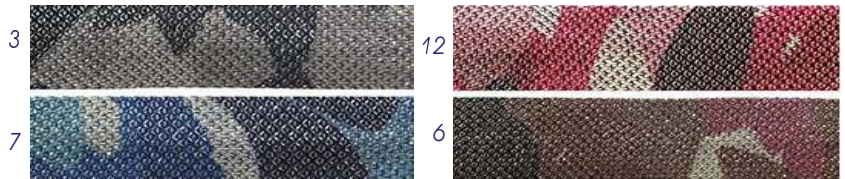
4391 - (21mm)

1151/5	25mt
2151/5	5mt

1335/6 - 2053 (2,5 cm)



5,5mt



1336/1 - 427 (25mm)



Tweed
Tessito - Weaved - Tissé - Tejida - Gewebt
20mt

1336/1 - 423 (25mm)

Lurex



1



2

Micropaillettes
1336/2 - 20 (20mm)



5



1

3

6

2

7

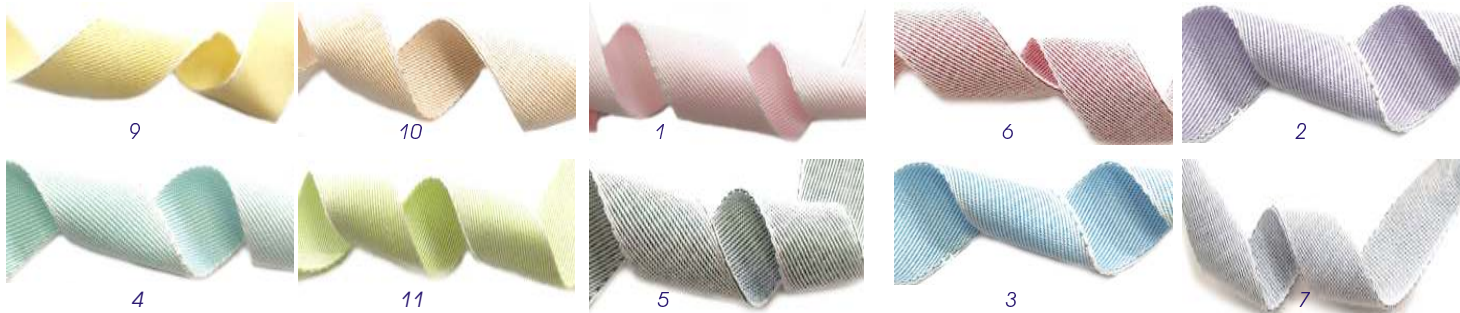


Nastro Cotone Spigato
Herringbone cotton - Coton à chevrons - Algodón en espiga - Fischgrätenbaumwolle

1337/8 - 30
(30mm)



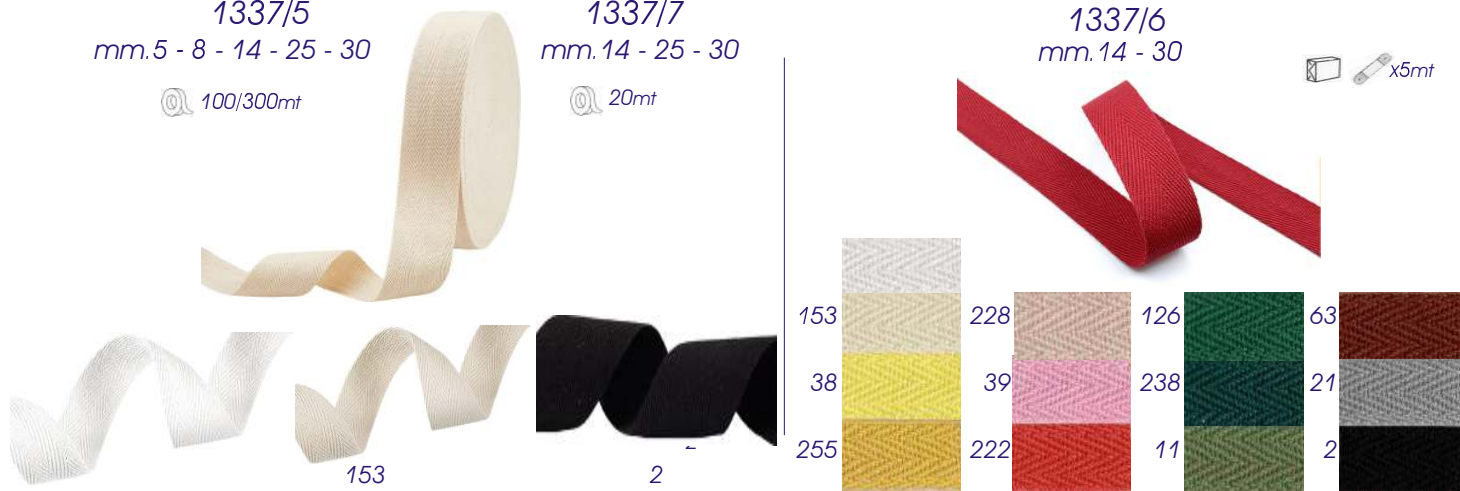
Gabardine
1337/0 (25mm)



1337/5
mm.5 - 8 - 14 - 25 - 30
100/300mt

1337/7
mm.14 - 25 - 30
20mt

1337/6
mm.14 - 30
x5mt



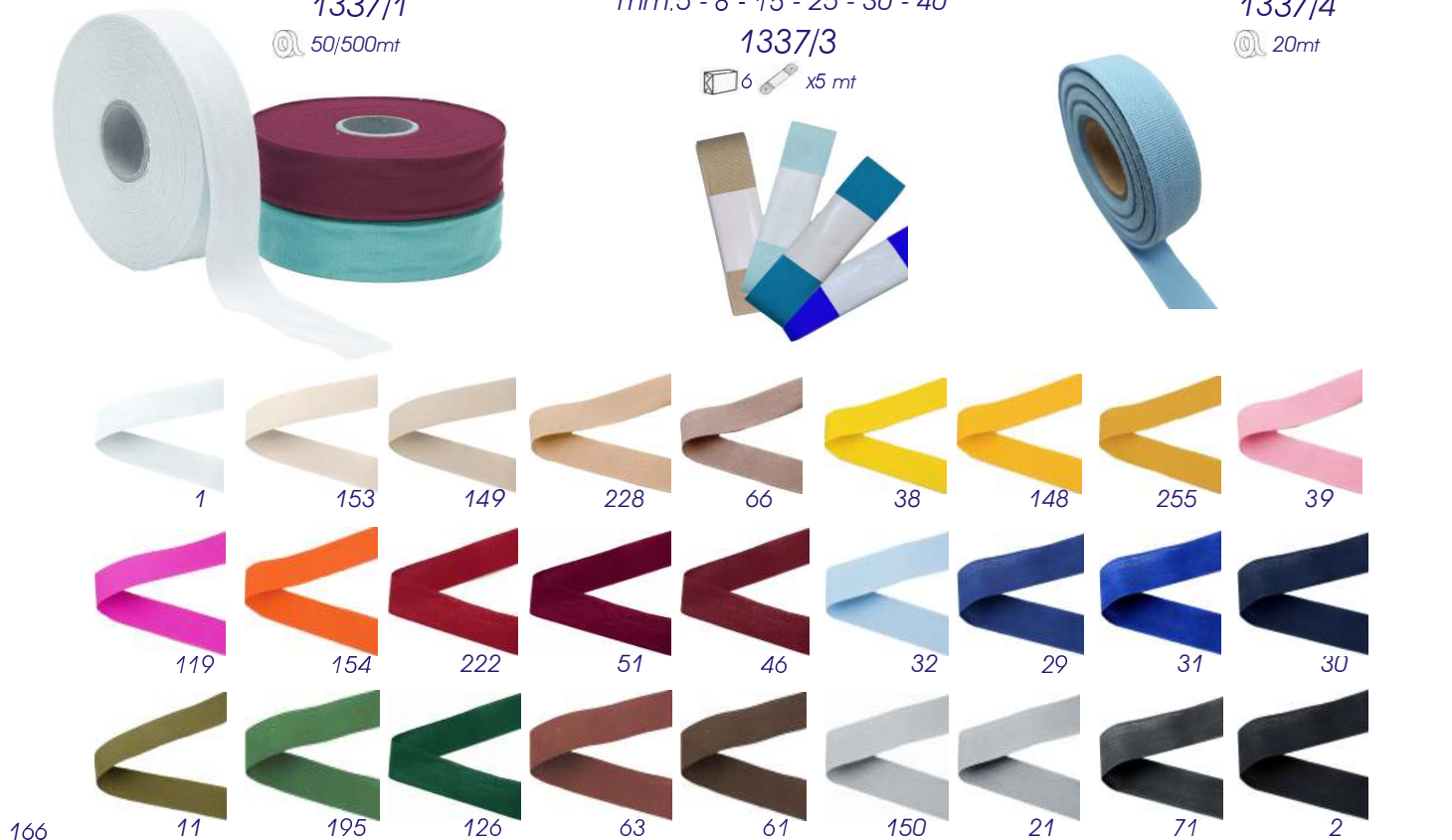
Cotone a Tela
Cotton Canvas Toile de coton - Lienzo de algodón - Baumwolle Leinwand

1337/1
50/500mt

mm.5 - 8 - 15 - 25 - 30 - 40

1337/3
6 x5 mt

1337/4
20mt





Nastro a tela misto Lino
 Linen blend-Mélange de lin-mezcla de lino-Leinenmischung

1338/0



2338/0	20 mt.
1338/0	X6



1338/8 - 40 (40mm)



1

3

2



4

5

10mt

Tessito - Weaved - Tissé - Tejida - Gewebt

1338/4 - 13618

1338/4	30mt
2338/4	10mt



2



11



3



9



8

Stampato

Printed - Imprimé - Impreso - Gedruckt

1337/2 - 15/7
(15mm)



1337/2 - 15/6
(15mm)



1337/2 - 15/5
(15mm)



1337/2 - 15/25
(15mm)



1337/2 - 15/9
(15mm)



2



3



Stampato
Printed - Imprimé - Impreso - Gedruckt

1337/2 - 15/21
(15mm)



1



2



3

1337/2 - 15/8
(15mm)



2



3



4

1337/2 - 15/18
(15mm)



1

1337/2 - 15/31
(15mm)



1



3

1337/2 - 15
(30mm)



2

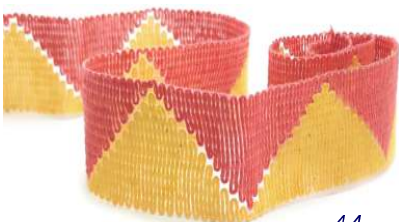


3

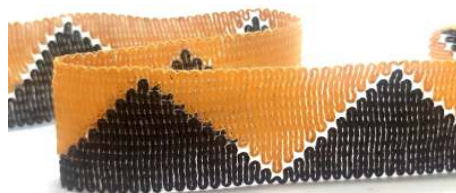


4

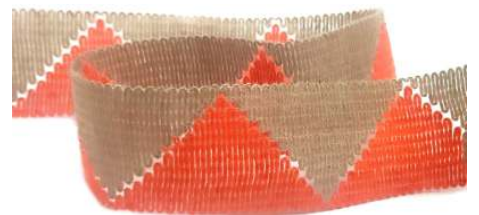
100% Cotone
Cotton
1334/1 - 30
(30mm)



14



15



16

1334/1 - 30B
(30mm)



23



24



25



Battitacco Cotone
Cotton sill - Seuil - Alféizar - Schwelle



1330/2 (15mm)



100% Poliestere - 100% Polyester - 100% Polyester - 100% Poliéster - 100% Polyester

25mt

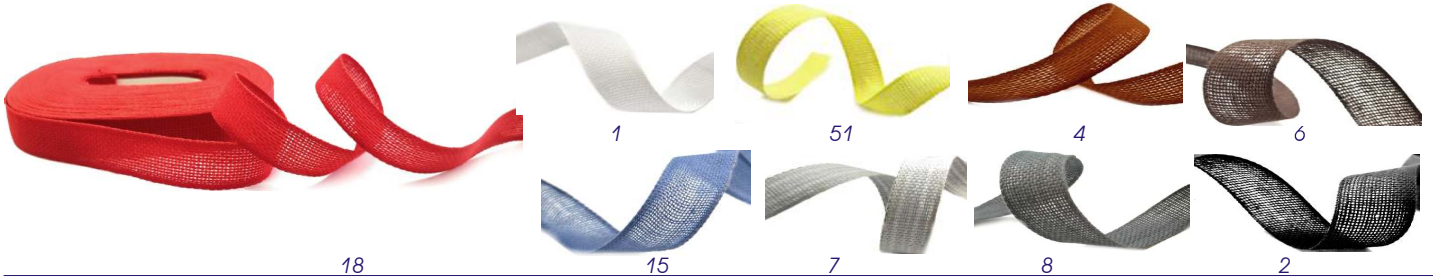
1330/3 (15 mm)



Straforte Cotone
Cotton Stiff Ribbon - Cotonruban rigide - Cinta rígida de algodón - Steifes Baumwollband

2463/1

20mt



Laccet 100% Cotone
Cotton-Coton-Algodón-Baumwolle

1317/2



17 Fusi

21 Fusi

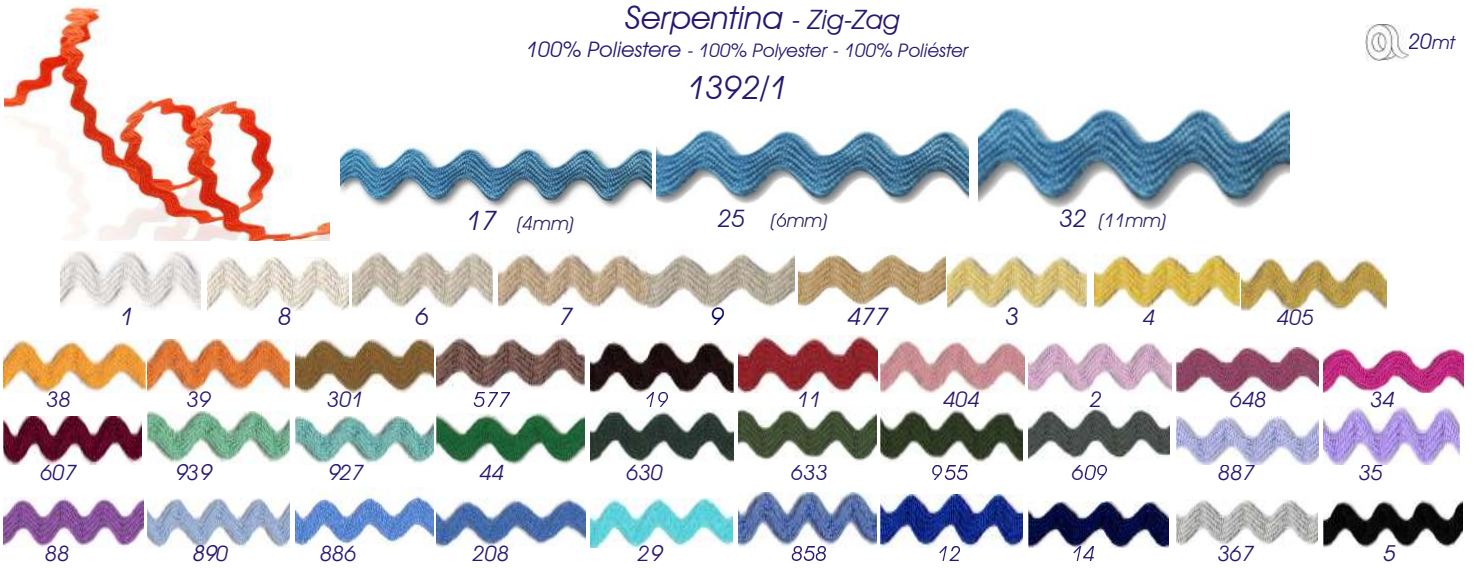
12x 18mt

Serpentina - Zig-Zag

100% Poliestere - 100% Polyester - 100% Poliéster

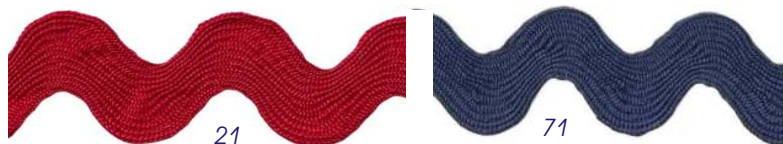
20mt

1392/1



Cotone - Cotton - Coton - Algodón - Baumwolle

1392/1 - 98 (22mm)

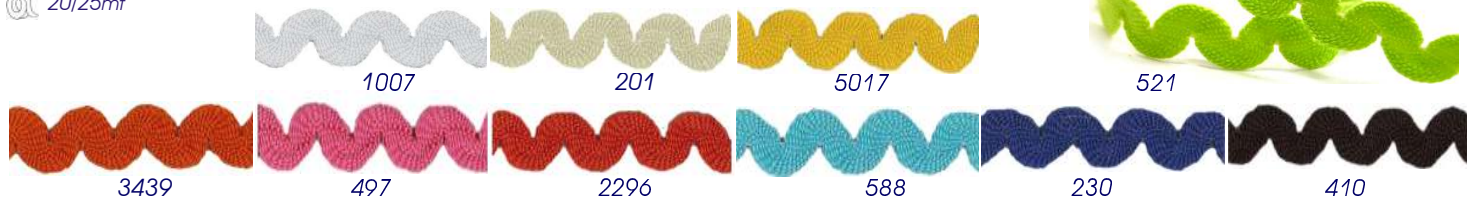




20/25mt

Serpentina Elastica
Elastic Zig-Zag - Gummizug

1392/7 (10mm)



Serpentina Elastica
Elastic Zig-Zag - Gummizug

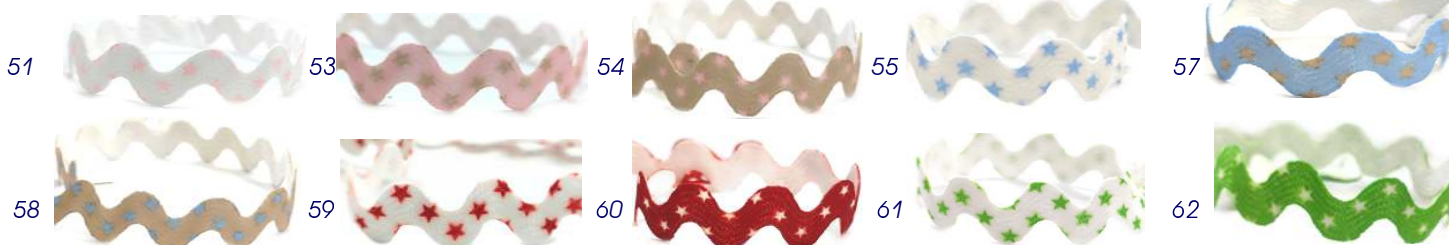
1392/9 - 12111 (12mm)



1392/8 - 200 (8mm)

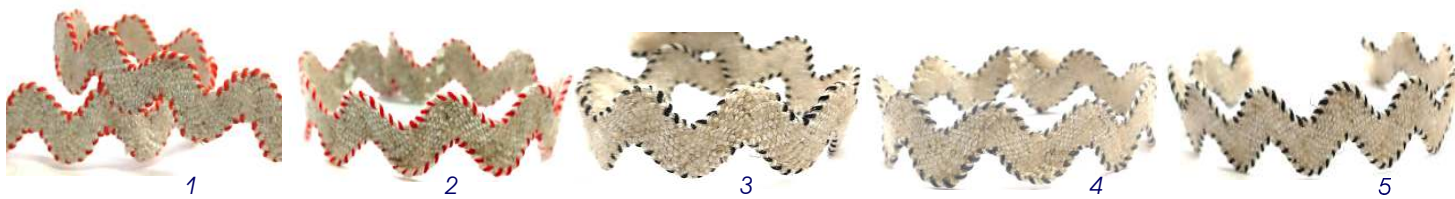


1392/8 - 200S (8mm)



1392/6 - 2560 (18mm)

65% Lino - Linen - Lin - Lienen - 35% Poliestere - Polyester - Poliéster

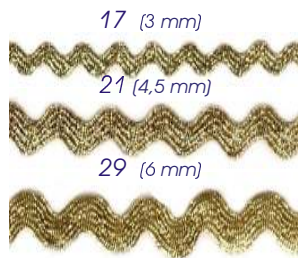


100% Acrilico - Acrylic - Acrylique - Acryl

1392/5 - 2141 (12mm)



Lurex
1393/1



1393/1 No. 17R-21R-29R	100mt
1393/1 No. 17P-21P-29P	10 x 20mt
2393/1 No. 17P-21P-29P	20mt

1495/0- 4866L



Treccina
Ciniglia Lurex



3

1495/0 - 4869 (1,2mm)



6



1496/2- 8249
(8mm)



1



12



21



72



24

1495/0 - 4860 (0,8cm)



57



5

Cotone - Cotton - Coton - Algodòn - Baumwolle

1496/1 - 110 (0,7cm)



1



5



6



7

82% Cotone - 18% Poliestere

1496/3 - 17204
5mm



915



916



918



919



104

1496/0 - 252640

10mt



152

Linò - Linen - Lin - Liene

1495/9 - 3545 (1,7cm)



Treccia Tubolare Lurex
Lurex Tubular Braid

1495/1 - 32 Fili/Fil

20mt



1



2

1495/1 - 4349 (16mm)



1



2

171



Treccia Tubolare Acetato
Acetate Tubolar Braid

1495/3 (3mm)



32 Fili - Wires - Fils - Alambres - Drähte

1495/4 (4mm)



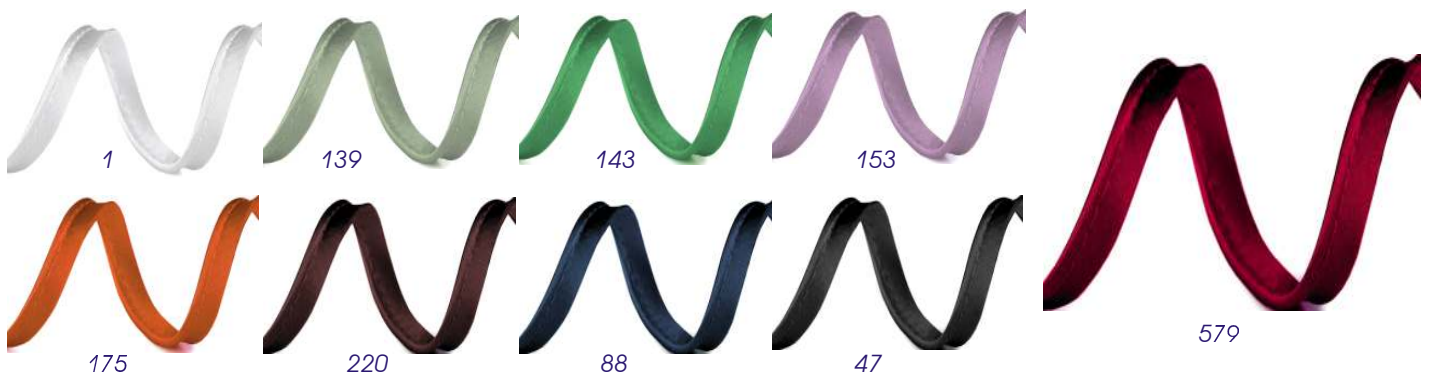
Profilo Cotone
Cotton Piping Trim

1366/1 - 2 (9mm)



Raso - Satin

1366/6 (9mm)



50mt

Lurex
1366/8 (9mm)



Profilo - Piping Trim
Nylon

1366/5 (7mm)



Velluto - Velvet
1366/7 (7mm)



1150/2 - 244010 (35mm)

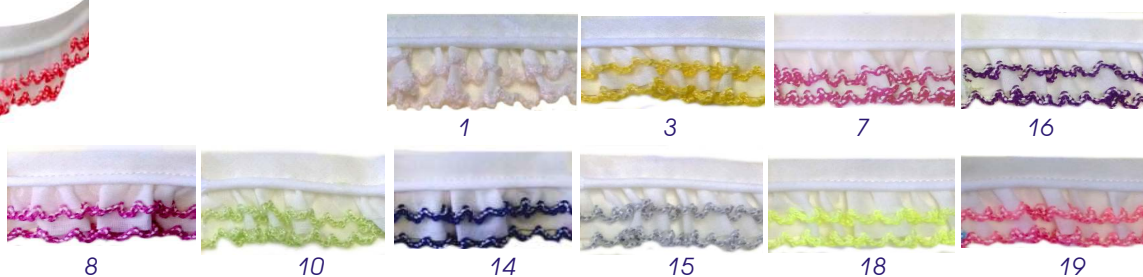


Piquet

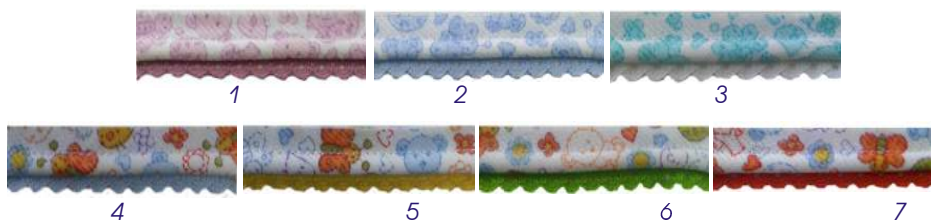
1150/4 - 243947 (25mm)



1150/2 - 95442 (25mm)



1150/2 - 95442 (25mm)



1150/2 - 243935 (25mm)





Nastro Sbienco Cotone

Cotton Bias Tape

Qualità Superiore
High Quality

No	mm	1391/0	2391/0	1391/4
14	14/4/4	10 x20mt		
25	25/6/6	5 x20mt	20mt	100mt
50	50/6/6			

No	mm	1391/8
18C	18/7/7	20mt
30C	30/15/15	



1																	
205	66	813	300	89	77	63	609	507	101								
905	51	50	21	651	40	330	3	104	501								
6	52	818	302	87	403	426	602	553	502								
114	42	749	310	90	78	216	61	560	503								
4	801	46	713	670	411	601	612	552	2								
210	805	12	712	22	408	501	120	112									
220	7	703	710	702	421	502	514	554									
287	400	9	711	407	420	503	176	550									

Acetato - Satin

No	mm	1391/3	2391/3	1391/2
14	14/4/4	10 x20mt		
25	25/6/6	5 x20mt	20mt	100mt
50	50/6/6			

205	76	502	7	700	579	
3	401	28	45	546	13	
21	24	23	601	39	15	
77	412	511	602	547	805	
6	420	66	29	46	16	
220	75	88	94	710	38	
11	20	550	32	25	47	
	22	21	661	578	1	



Ottomano

1391/8 - 30G (30/15/15)

1	66	12	302	553	78
6	42	50	407	3	
4	7	21	401	2	



Organza
Organdie

1391/8 - 30S (30/15/15)



402

544

490

424

558

466

Tulle
Tul

1391/8 - 30T (30/15/15)



3362

3327

3328

Raso
Satin

1391/8 - 30R (30/15/15)



1

205

3

6

578

466

Pelle Sintetica
Synthetic Leather

1391/8 - 30P (30/15/15)



413

1711

3411

284

412

Pelle
Leather

1391/6 - 14P (14mm)

1391/7 - (25mm)



2010

2004

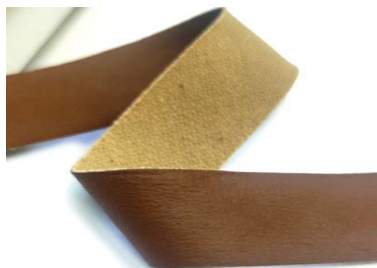
2052

2031

2001

2906

1391/7 - 1 (25mm)



5



3



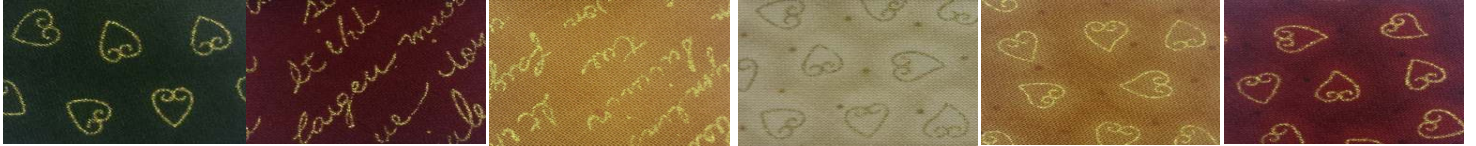
25mt

Lino
Linen
1391/8 - 30L (30/15/15)



10mt

1391/8 - 25N
(25mm)



320

317

318

314

319

315

1391/9 - 14R (14/4mm)
1391/9 - 25R (25/5mm)



1



2



2



1

1391/9 - 14L (14/4mm)
1391/9 - 25L (25/5mm)

1391/7 - 5L
Lurex (25mm)

Lamè

1391/1 - 133318 (18mm)
1391/1 - 133330 (30mm)



95

96

97



1391/6 - 5 (14/4mm)
1391/7 - 5 (25/5mm)



1101



295



19



09



29



294

Lycra 100%
1391/7 - 8 (25mm)



1 2 200 230 530 612

Raso
Satin

1391/6 - 3 (14mm)

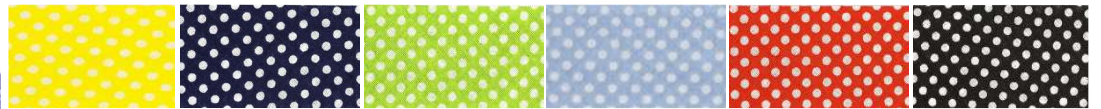


4 5 6 7 8 9

Nastro Sbioco Cotone
Cotton Bias Tape



1391/1 - 403330 (30mm)



6 4 12 21 5 26

1391/6-4 (14/4mm)

1391/7-4 (25/5mm)



3 1 5 21 4 2 6

1391/6-7 (14/4mm)

1391/7-7 (25/5mm)



29 22 32 21 41 28 25

Plquet

1391/7-30 (25/5mm)



1 2 3 4 5

1391/1-463318 (18mm)

1391/1-463330 (30mm)



1 2 3 4



Nastro Sbieco Cotone
Cotton Bias Tape

JEANS
1391/1 - 18J (18mm)
1391/1 - 30J (30mm)

1391/7 - 214 (25/5mm)



1391/7 - 15 (25/5mm)



1391/6 - 76 (14/4mm)
1391/7 - 76 (25/5mm)



1391/7 - 69 (25/5mm)



1391/7 - 68 (25/5mm)



1391/7 - 40 (25/5mm)

1391/7 - 50 (25/5mm)

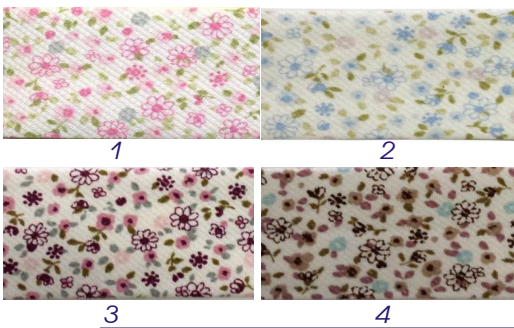


1391/1 - 327830 (30mm)



1391/1 - 328830 (30mm)

1391/1 - 329930 (30mm)



1391/7 - 63 (25/5mm)



Nastro Sbieco Cotone
Cotton Bias Tape



1391/1 - 330030 (30mm)



1391/1 - 332418 (18mm)

1391/1 - 332430 (30mm)



1391/1 - 333818 (18mm)

1391/1 - 333830 (30mm)



1391/1 - 332418 (18mm)

1391/1 - 332430 (30mm)



1391/1 - 331930 (30mm)



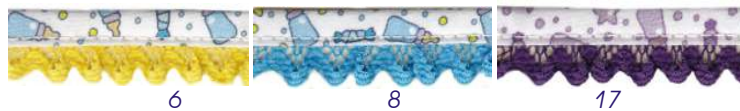
1391/1 - 333318 (18mm)

1391/1 - 333330 (30mm)



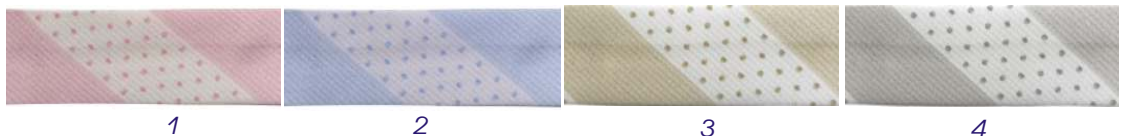
Doppio Labbro - Double Lip

2150/5 - 25441 (14mm)



1391/1 - 18F (18mm)

1391/1 - 30F (30mm)



Profilo Cotone - Cotton Piping Trim

1150/2 - 244114 (18mm)





Nastro Sbieco Cotone

Cotton Bias Tape

1391/1 - 329430 (30mm)



Sbieco Doppio Labbro Cotone

Bias Double Lip Cotton

1150/1 - 243820 (14mm)



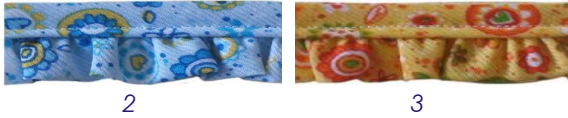
1150/1 - 244293 (14mm)



Profilo Cotone

Cotton Piping Trim

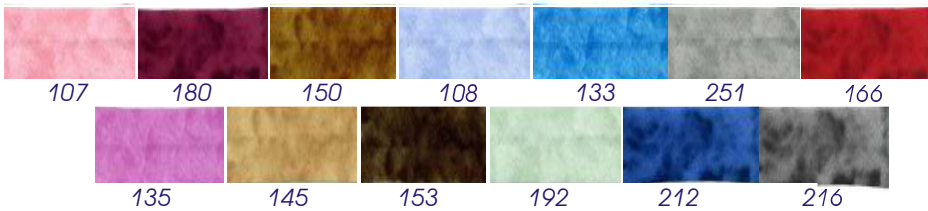
1150/4 - 244344 (14mm)



1150/1 - 244152 (14mm)



1391/1 - 30M (30mm)

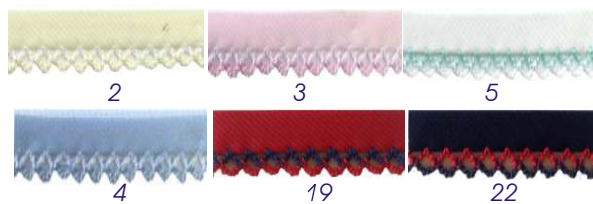


1150/1 - 244174 (14mm)

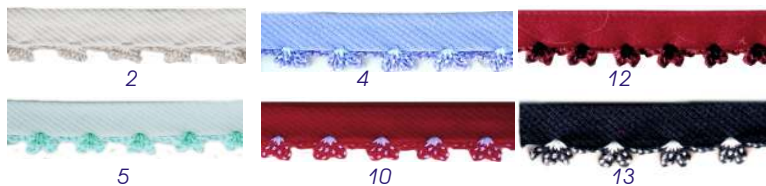


1150/1 - 243872 (14mm)

Piquet

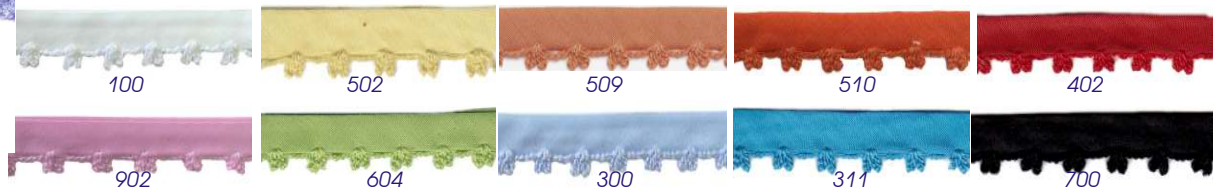


1150/1 - 263442 (14mm)

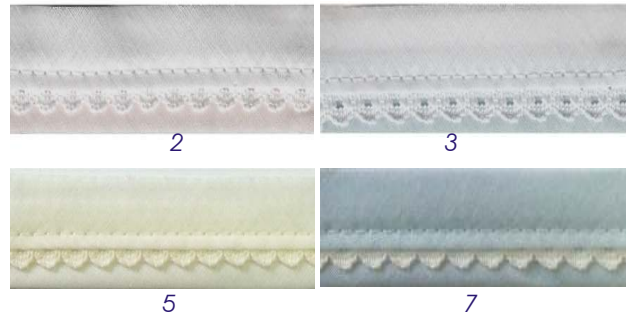




1150/1-243174 (14mm)

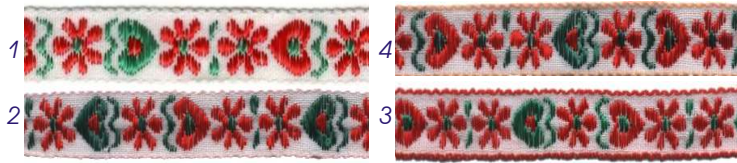


1150/1-243876 (18mm)



Festone Fiore
Scallop Trim

1275/4 - 2 (10mm)



50mt



1275/5 (10mm)



1275/3 - 9 (10mm)



1275/1 (15mm)



20mt



50mt

Festone Fiore Scallop Trim

1275/2 - 11 (10mm)



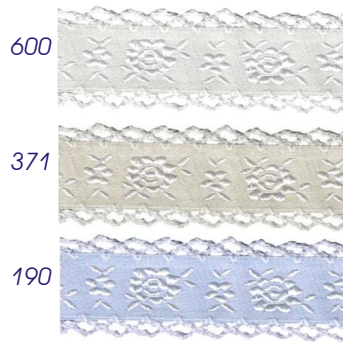
20mt

1275/6 - 10160 (15mm)

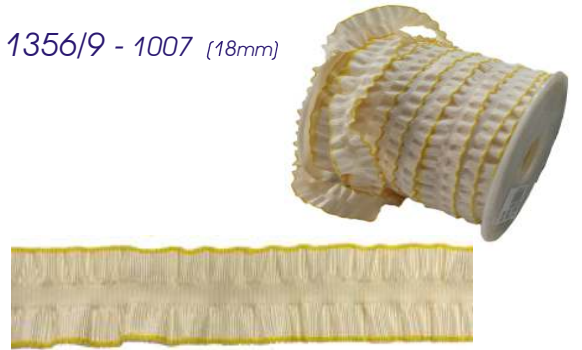


Jacquard

1356/3 - 2001 (25mm)



1356/9 - 1007 (18mm)



25mt

1356/5 - 143503 (20mm)

10mt



1356/2 - 1020 (15mm)



1356/4 - 171251 (15mm)



1356/4 - 171227 (15mm)



1356/4 - 161708 (11mm)



10/1

10/4

1356/5 - 43628



1559

1356/5 - 43596



1356/1 - 143914 (25mm)



Jacquard

1356/1 - 143913 (22mm)



10mt

1356/1 - 143651 (22mm)



006



007



008

1356/1 - 143929 (20mm)



112



115



118



226



996



556

1356/5 - 145008 (18mm)



066



055

1356/5 - 145009 (18mm)



066



055

1356/5 - 145007 (18mm)



015



018



055



019

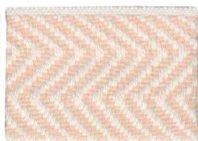
1356/1 - 143905 (50mm)



114



113



115



112



118



116

1356/5 - 144007 (50mm)



162



142



18



10mt

Jacquard

1356/5 - 145002 (30mm)

1356/5 - 145003* (50mm)



066



016



085



014



015*



018*



055

1356/5 - 145000 (30mm)



018



015



066



085



055



1356/1 - 143841 (50mm)



888



645



1356/1 - 143970 (40mm)



532



645



216



104

1356/1 - 143737 (50mm)



104

1356/1 - 143843 (50mm)



104

1356/5 - 145023



1356/1 - 143500 (50mm)



1356/0 (50mm)



Jacquard
 1356/3 - 6313/3* (30mm)
 1356/3 - 6313/5 (50mm)



10mt



4



8

1356/3 - 4518/3 (30mm)



4



2



08

1356/3 - 2875/3* (30mm)

1356/3 - 2875/5 (50mm)



3*



4*



1*



5

1356/3 - 7082/4* (40mm)

1356/3 - 7082/5 (50mm)



2



4*



1



3

1356/8 - 280/30 (30mm)

1356/8 - 280/50 (50mm)



10



11



6



9

1356/2 - 575 (50mm)



1



2



1356/2 - 590 (50mm)



4



5



10mt

Jacquard

1356/2 - 690 (30mm)



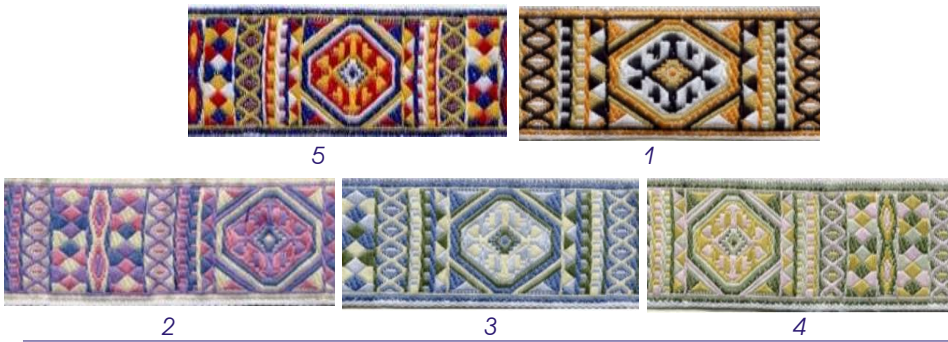
4

1356/2 - 800 (50mm)



1356/2 - 16B (30mm)

1356/2 - 16A (50mm)



9

1356/2 - 543 (50mm)



7

1356/2 - 725 (30mm)



Jacquard
1356/2 - 47 (30mm)



2



6

10

1356/2 - 2 (30mm)



4



1



5



3

1356/2 - 513 (15mm)



1



4

20mt

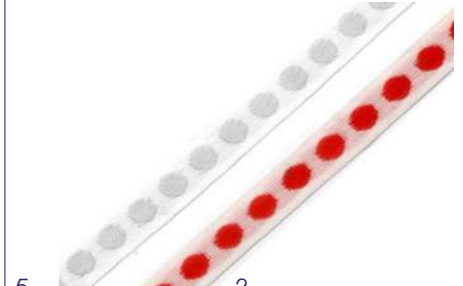
1356/2 - 2505 (15mm)



1356/2 - 48 (15mm)



1356/2 - 580 (15mm)



5

2

1356/2 - 27 (30mm)



1



6



4

1356/2 - 640 (50mm)



3



10



9



4

1356/8 - 36 (30mm)



3



4



10mt

Jacquard

1356/2 - 2303/3 (30mm)

1356/2 - 2303/5* (50mm)



250



330*



260

1356/2 - 2086 (30mm)

1356/2 - 2085 (50mm)

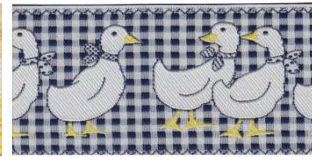
330



430

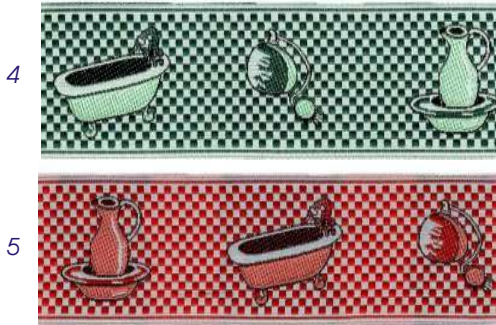


130



250

1356/9 - 9216 (32mm)



4

5

1356/9 - 9232 (35mm)



1356/9 - 2196 (30mm)



1356/9 - 9179 (20mm)



1356/9 - 2532 (15mm)



190



414

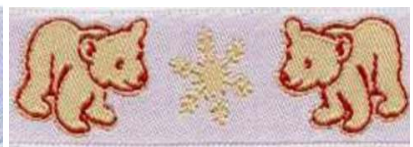
1356/8 - 38 (30mm)



1



2

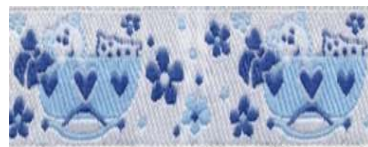


3

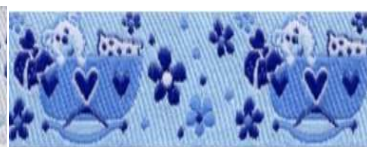
1356/8 - 34 (30mm)



1



2



4



3

Jacquard

1356/8 - 22 (30mm)



25mt



1



2



3



4



6

1356/8 - 23 (30mm)



1



4



8



5



7

1356/2 - 528 (50mm)



7



G



1



2



3



4



5



6



10



8



9

1356/2 - 531 (40mm)



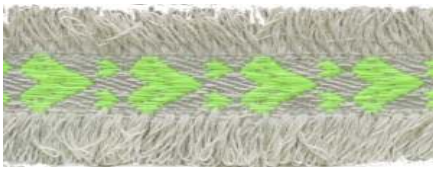
1



2



4



6



5



3



Jacquard

1356/2 - 2000B (20mm)

1356/2 - 2000 (30mm)

1356/2 - 2000A (50mm)

10mt



1356/7 - 227/50 (50mm)



1



2



1356/2 - 506 (15mm)



1



5



2



12



13



14



15

20mt

1356/7 - 508 (20mm)



3



4



6

1356/7 - 197/30 (30mm)



2



1



4



3

1356/7 - 205 (30mm)



2



3



4

Jacquard

1356/7 - 216/30 (30mm)

1356/7 - 216/50 (50mm)



10mt



3



1



4



2



5



7

1356/7 - 218/30 (30mm)

1356/7 - 218/50 (50mm)



3



9

1356/7 - 201 (30mm)



2



1



6

1356/2 - 22/50 (50mm)

1356/2 - 22/30 (30mm)



1356/2 - 21/50 (50mm)

1356/2 - 21/30 (30mm)



1356/2 - 48/30 (30mm)

1356/2 - 48/50 (50mm)



1



2



Jacquard

1356/2 - 181/30 (30mm)



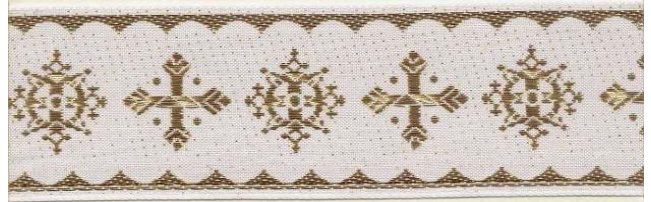
1356/2 - 181/50 (50mm)



1356/2 - 182/30 (30mm)



1356/2 - 182/50 (50mm)



1356/2 - 190/30 (30mm)



1356/2 - 190/50 (50mm)



Nastro Lurex

Lurex Tape - Ruban lurex - Cinta de lurex - Lurexband

1335/2

6mm - 12mm - 25mm - 38mm



2



1

Anima Metallica

Lurex Tape With Metallic Core

1335/4

25mm - 38mm - 50mm



2



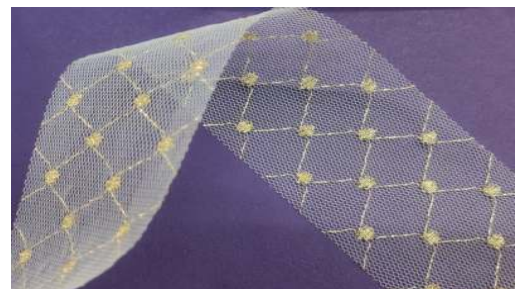
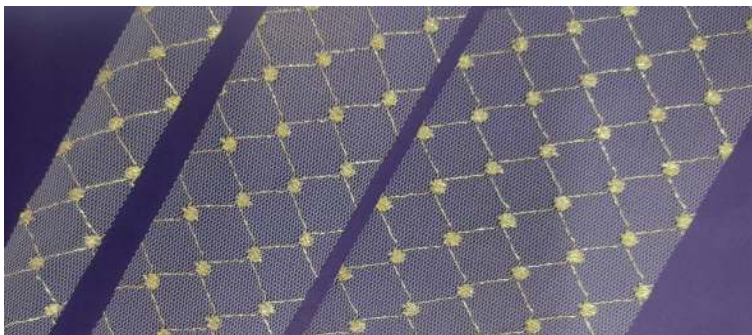
1

1335/5

25mm

50mm

70mm



Nastro Lamè Animato
Lurex Tape With Core

1341/4 (40mm)



1341/4 - 1 (40mm)

Colori assortiti



20 @ 3 yds



@ 3 yds

1496/9 (6mm)

@ 100mt



2

3

1494/1 - 10 (10mm)

1494/1	@	100mt
2494/1	@	20mt

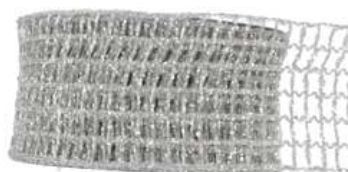


1

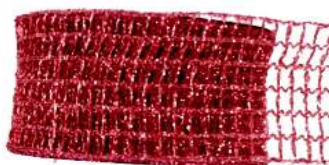


2

1275/7
30mm - 50mm



2



4



3

@ 20mt

Rete JUTA
JUTA Net Ribbon
1340/1



15cm



6cm

@ 10/20mt